



Warrior Products, Inc.  
16850 SW Upper Boones Ferry Rd  
Ste. A  
Durham, OR 97224  
Phone (888) 220-6861  
Fax (503) 692-0364  
techsupport@warriorproducts.com

---

## 93109 JK HoodLift TailGate Prop Kit

### Installation Instructions



Here it is installed just like yours will be in a few minutes. Note that the gas spring tilts downward with the cylinder end up. That is because the spring is filled with nitrogen to supply the opening pressure plus a small amount of oil that lubricates the seal and provides the dampened stop when it gets to the end of the stroke. Mounting the spring straight or upside down will allow the nitrogen to eventually leak out of the un-lubricated seal plus the tailgate won't come to that smooth stop that yours will have when you install it properly. Please observe this orientation and try not to deviate too much from the instructions.

#### Tools you will need:

Drill  
Sharp Knife  
Marking Pen  
Measuring Tape  
5/16" Nut Driver  
15mm Socket or Box End Wrench (or Adjustable Wrench)  
Socket Driver and Extension  
5/16" Socket Wrench or 5/16" Box End Wrench



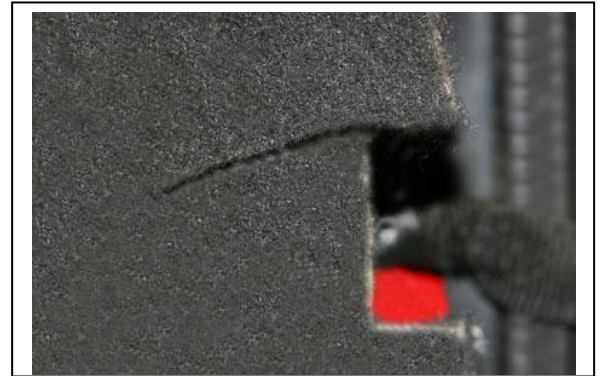
Warrior Products, Inc.  
16850 SW Upper Boones Ferry Rd  
Ste. A  
Durham, OR 97224  
Phone (888) 220-6861  
Fax (503) 692-0364  
techsupport@warriorproducts.com

---

Materials included:

- (1) Gas Spring
- (5) Star Lock Washers
- (1) Large Bracket
- (1) Small Bracket
- (5) #10 Self-tapping Screws
- (2) Ball Stud
- (2) Self-locking Nut

1. First, using a sharp knife, cut a slit in your beloved Jeep's carpet (gulp!) from the top of the small cutout to the speaker, if you have one. The slit should be slanted downward so the end of it is about 3/8" lower at the end of the cut in the front (away from the tailgate) than it was where you started. This angle is to accommodate the tilted bracket you will be installing. If you don't have a speaker make the cut about 1 3/4 inches long.



2. If you have the large speaker in the rear, remove the (3) 15mm nuts holding it on and set it aside. You don't have to disconnect it, just get it out of the way.

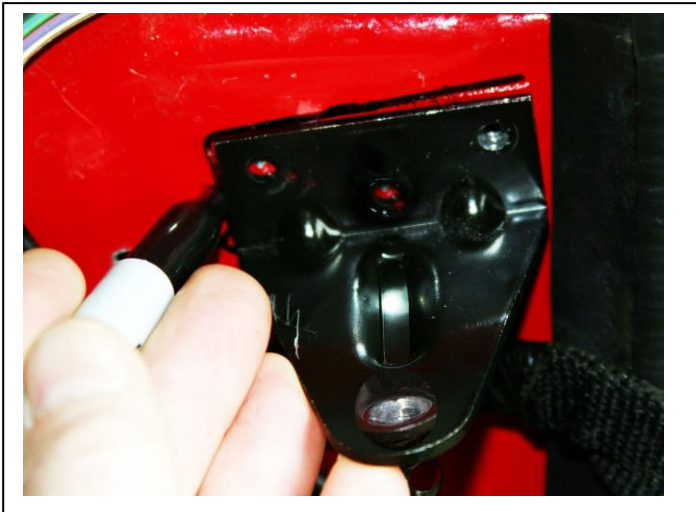




Warrior Products, Inc.  
16850 SW Upper Boones Ferry Rd  
Ste. A  
Durham, OR 97224  
Phone (888) 220-6861  
Fax (503) 692-0364  
techsupport@warriorproducts.com

---

3. For fitment, place the large bracket in the slit so you get the location and angle right, then carefully pull the carpet back and mark the location of the bracket. The rear edge of the bracket should just touch the rubber tail gate seal.



4. Get your trusty drill motor and drive in the supplied self-tapping screws. Use a star washer on each screw. Be sure not to over-torque them as you risk breaking the heads off the screws. We recommend the use of a variable speed, battery-powered drill with the adjustable clutch set so that it clicks when the screw gets tight. You can final-set them with a 5/16" socket, wrist tight. If you do happen to strip them, you can drill out the holes with a #10 or a 13/64" drill and use 3/16" short pop rivets (not provided). Then install the ball stud onto the bracket with the ball **DOWN** and tighten the nut.



5. Snap the rod end of the gas spring onto the tub mounted ball stud bracket and then open the tailgate all the way till it stops so you can position the small, tailgate bracket. You will be installing the tailgate side ball stud bracket so that the spring pushes the tailgate all the way to the Jeep hinges' built-in stop.





Warrior Products, Inc.  
16850 SW Upper Boones Ferry Rd  
Ste. A  
Durham, OR 97224  
Phone (888) 220-6861  
Fax (503) 692-0364  
techsupport@warriorproducts.com

---

***It is important that the Jeep's tailgate opens all the way to the tailgate stop! If the gas spring becomes the limiting stop, something will break! If you ever have to remove a gas spring, you can do so by slipping a small screwdriver under the small spring-clip on the end and prying it up to release it. The spring will just snap back on to the ball stud when you reinstall it.***



6. Assemble the tailgate bracket with the ball stud positioned in the image provided. These instructions show a riveted on ball stud, but your kit will consist of a bracket and threaded-on ball stud. Snap the tailgate bracket onto the cylinder side of the gas spring and with the tailgate held against the Jeep's stop, mark the location of the outer (small) bracket. The outermost screw should be 2 ¼ inches from the top of the tail gate. The other screw should be about 3/8" lower. The one you see here is only ¼" lower. You will be able to easily see where it goes by putting in the outer screw first, then aligning the bracket with the slanted spring. Go ahead and drive in both screws, using the supplied star washers.





Warrior Products, Inc.  
16850 SW Upper Boones Ferry Rd  
Ste. A  
Durham, OR 97224  
Phone (888) 220-6861  
Fax (503) 692-0364  
techsupport@warriorproducts.com

---

7. Snap on your gas spring if you took it off to drill and see how nicely everything works. Reinstall the subwoofer (if you have one) and tuck the carpet in behind the rubber door seal. Enjoy your HoodLift® TailGate Prop!

Do you have a HoodLift®? If not, go to [www.hoodlift.com](http://www.hoodlift.com) and check them out!

No more fooling with that awkward and dangerous prop rod. Your hood will open as easily as your tailgate does with the HoodLift® TailGate Prop.



If you need further assistance installing your product, please contact us by email at [techsupport@warriorproducts.com](mailto:techsupport@warriorproducts.com) or call us at (888) 220-6861.

**THANK YOU FOR PURCHASING HOODLIFT BY WARRIOR PRODUCTS**

**QUALITY • INTEGRITY • INNOVATION • SERVICE**