



Protecting Your Adventure Lifestyle

Warrior Products, Inc.  
 16850 SW Upper Boones Ferry Rd  
 Ste. A  
 Durham, OR 97224  
 Phone (888) 220-6861  
 Fax (503) 692-0364  
 techsupport@warriorproducts.com

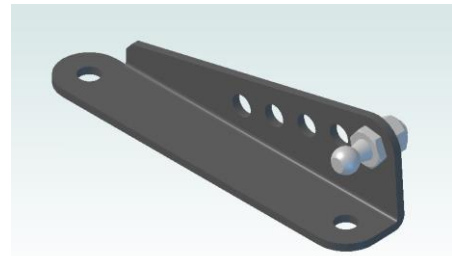
## 62110 Subaru BRZ/Scion FR-S Hoodlift® Kit INSTALLATION INSTRUCTIONS

**NOTE:** Congratulations on your purchase of a genuine HoodLift® made by the company who invented the Jeep aftermarket HoodLift® in the mid 1990's. It is made from the finest components available and should give you years of trouble-free service. The installation should take less than an hour and is a completely bolt-on application. Please read through the entire instructions before getting started.

Tools needed	Supplied Parts
Ratchet wrench	(2) Gas springs
12mm socket	(2) Hood hinge ball stud brackets
7/16" Box end wrench	(4) 10mm threaded ball studs
½" Box end wrench	(4) 5/16" Nylock nuts
	(4) 5/16" SAE flat washers

### INSTALLATION

1. Lift up the hood and place it on the factory prop rod. Locate the hood hinge ball stud brackets and using the 7/16" and ½" box end wrenches, install the 10mm ball studs and 5/16" Nylock nuts in the forward most hole shown in **Fig. 1**.



**Fig. 1**



2. First we'll install the hood hinge brackets. The hood hinges have two 12mm bolts per side that attach it to the hood. These are the bolts you will be using to mount the upper ball stud brackets. **Work on only one side at a time.** Have the assembled hood hinge ball stud brackets within reach before starting this next step. Standing on the driver side of the vehicle, hold the weight of the hood in your right hand while removing the hinge bolts with your left. Next, set the ball stud bracket, with the ball pointing towards the outside of the vehicle, onto the hinges then reinstall the bolts through the bracket and hinge into the hood. **Do not attempt to 'sandwich' the bracket between the hinge and hood.** Repeat for the passenger side.

3. Next, we'll be installing the lower fender wall ball studs. Starting on the driver side, you will note two lines that run along the wall of the engine compartment. One is the windshield fluid squirter hose and the other is the hood release cable. Utilizing a trim removal tool or something similar, unclip two white nylon clips that hold these two lines along the fender wall. See **Fig. 2 & 3**.



**Fig. 2**



Protecting Your Adventure Lifestyle

Warrior Products, Inc.  
16850 SW Upper Boones Ferry Rd  
Ste. A  
Durham, OR 97224  
Phone (888) 220-6861  
Fax (503) 692-0364  
techsupport@warriorproducts.com

- 
- 
- The larger of the two clips was installed into an oblong hole that we will be utilizing for the mounting of our fender mounted ball stud. Take the ball stud and place a 5/16" washer over the threads then insert the threads into the oblong hole. Place another washer then the 5/16" Nylock nut on the threads and tighten. There is not much space behind the sheet metal, so it helps to use a short box-ended wrench to hold the Nylock nut while you tighten the ball stud. **Fig. 4.**



The washer fluid hose and hood release cable can be relocated to below the ball stud with no issues. You may choose to drill a new mounting hole for the clips to offset their mounts if desired.



spring before folding the factory prop rod, you may have some difficulty disengaging it. Your hood will now remain up, but before testing the opening and closing function of the install, check for tools or anything that may have been left in the engine compartment.

- Now take the gas springs and with the **cylinder side up**, snap them onto just the hinge mounted ball studs. Next, fold the factory prop rod back into its parked location while continuing to hold up the hood with your hand. Snap the rod end of the gas springs onto the lower ball studs, taking care to not let go of the hood until both gas springs are fully installed into place. If you completely install the gas

- Once you've determined the engine compartment is free and clear, go ahead and lower the hood slowly making sure there is no binding or clearance issues. If everything checks out ok, lift up on the hood allowing the gas springs to take over about 1/3<sup>rd</sup> of the way up. Close and open the hood a few times to check the gas springs' functionality. They should raise the hood from a neutral point about 16" opened and come to a smooth, dampened stop at the top of the stroke. If it does not have that dampened stop, you may have inadvertently installed your gas springs upside down. The large cylinder portion of the gas spring should be oriented up. Upside down gas springs will also have a shorter life than properly installed ones.
- If you ever need to remove a gas spring from its ball stud bracket, simply slip a small flat-bladed screwdriver under the small semi-circular clip near the end and pry it up to release the end from the ball stud it is capturing.



- Your installation is now complete.

---

---

If you need further assistance installing your product, please contact us by email at [techsupport@warriorproducts.com](mailto:techsupport@warriorproducts.com) or call us at (888) 220-6861.

**THANK YOU FOR PURCHASING HOODLIFT BY WARRIOR PRODUCTS**

**QUALITY • INTEGRITY • INNOVATION • SERVICE**