



Protecting Your Adventure Lifestyle

Warrior Products, Inc.  
16850 SW Upper Boones Ferry Rd  
Ste. A  
Durham, OR 97224  
Phone (888) 220-6861  
Fax (503) 692-0364  
sales@warriorproducts.com

---

## **99834 CJ & YJ Hoodlift® Kit**

### **INSTALLATION INSTRUCTIONS**

### **Fits '72-'86 CJ & '87-'95 YJ WRANGLER**

Congratulations on your purchase of a genuine HoodLift® made by the company who invented the Jeep aftermarket HoodLift® in the mid 1990's. It is made from the finest components available and should give you years of trouble-free service. The installation should take less than an hour and some drilling is required. Please read the instructions thoroughly before getting started.

#### **Tools needed**

Hand drill, preferably cordless  
 $\frac{1}{8}$ " Drill bit  
 $\frac{3}{8}$ " Socket and ratchet handle  
Two  $\frac{7}{16}$ " Box end wrenches  
 $\frac{1}{2}$ " Box end wrench  
Measuring tape  
Marker pen or grease pencil  
Center punch

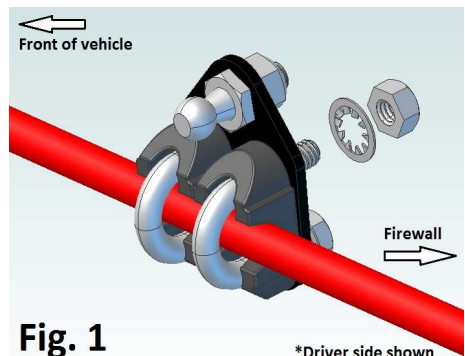
#### **Supplied Parts**

(2) Gas springs  
(1) Upper rear bracket (straight)  
(1) Upper rear bracket (angled)  
(2) Upper front brace (tube)  
(2) 'L' Upper front bracket  
(2) Lower ball stud plate  
(4)  $\frac{5}{16}$ " cable clamp  
(4) 10mm threaded ball studs  
(4)  $\frac{5}{16}$ " Nylock nuts  
(12)  $\frac{1}{4}$ "x $\frac{1}{2}$ " sheet metal screws  
(12)  $\frac{1}{4}$ " Internal lock washers  
(8)  $\frac{5}{16}$ " Internal lock washers  
(2)  $\frac{1}{4}$ "x $\frac{5}{8}$ " Bolt  
(2)  $\frac{1}{4}$ " Regular nut

**NOTE:** The following directions are merely suggestions and can be greatly modified to fit your particular application. If you do deviate from the recommended bracket locations, be certain you have no interference from things like the air cleaner, gas springs, grill support rods, or other engine accessories. **Suggestion:** If interference issues are suspected, use duct tape to temporarily place the brackets for checking fitment. **Fiberglass hoods:** Use caution tightening screws so you don't strip them.

#### **INSTALLATION**

1. Lift up the hood and place it on the factory prop rod or lay the hood against the windshield frame. Install the lower ball stud plate brackets onto the grill support rods first. Measure approx. 6 inches\* from the firewall and install the lower ball stud plate brackets with the cable clamps using the  $\frac{5}{16}$ " internal lock washers. Don't 'over-torque' the u-bolts as they could strip; 'wrist-tight' should be plenty. See **Fig. 1** for their assembly and orientation. \*You may move them forward or aft a couple inches for clearance inside the engine compartment, however, doing so will alter the pressure exerted by the gas springs. Too far forward will bottom-out the springs and prevent the hood from closing completely.



2. Next, install the Upper Rear Brackets. You'll notice that they look very similar, however one is straight and the other is angled. **If you're installing this kit onto a CJ, then the angled bracket is to be installed on the driver side. If installing onto a YJ, the angled bracket goes on the passenger side.**

3. The placement of the Upper Brackets is as follows:

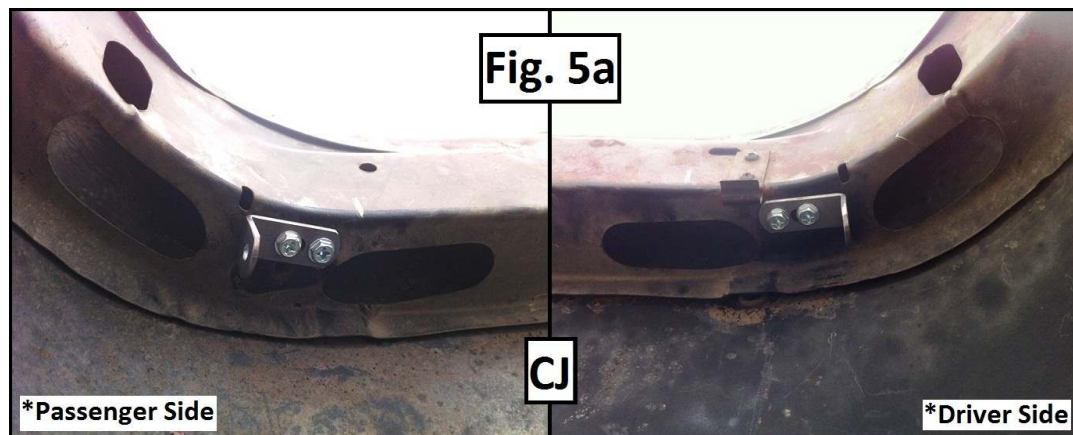
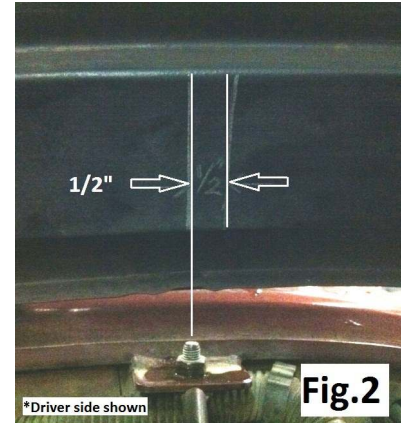
- Locate the Jeeps' mounting bolts for the grill support rods that attach to the firewall. Using tape or a grease pencil, draw a line vertically up from the center of that bolt and up onto the support structure at the back of the hood. From this vertical line, measure  $\frac{1}{2}$ " outboard and draw another vertical line. **Fig. 2**



Protecting Your Adventure Lifestyle

Warrior Products, Inc.  
16850 SW Upper Boones Ferry Rd  
Ste. A  
Durham, OR 97224  
Phone (888) 220-6861  
Fax (503) 692-0364  
sales@warriorproducts.com

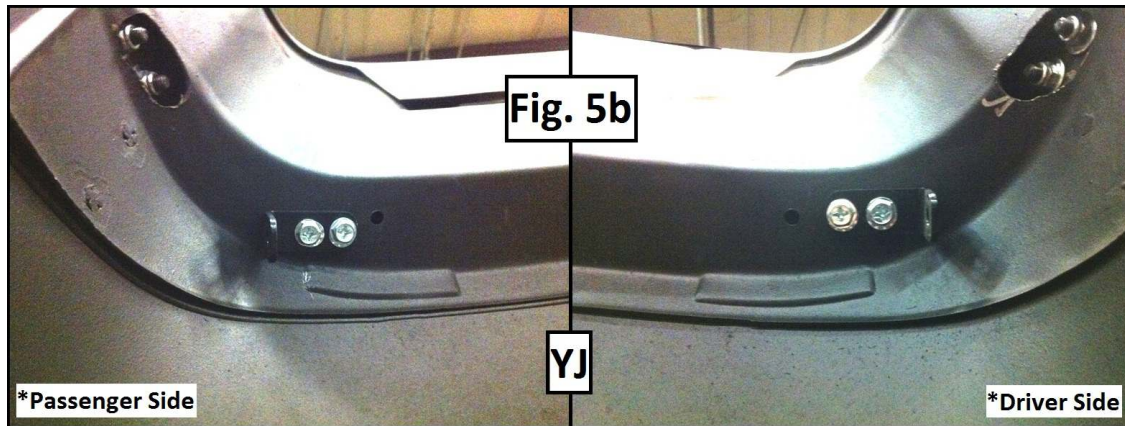
- Hold the inside edge of the driver side Upper Rear Bracket plate alongside this outermost vertical line and make some marks through the holes in the plate. Utilizing a center punch, indent these marks for drilling. **Fig. 3**
- Wrap some masking tape around your  $\frac{1}{8}$ " drill bit as shown in **Fig. 4** so it will only go approx.  $\frac{1}{4}$ " through the sheet metal. This is to prevent you from drilling too far and damaging anything that may be below the surface of the sheet metal you're drilling through. Make certain the tape is wrapped tight and that it goes all the way to the drill chuck so the tape doesn't slide. Drill the holes with the tape-wrapped drill for the  $\frac{1}{4}$ " sheet metal screws. Set the correct Upper Rear Bracket back onto the hood structure surface for the side you're working on.
- Put the  $\frac{1}{4}$ " star lock washers on the  $\frac{1}{4}$ " sheet metal screws and drive them through the plate and into the holes you just drilled. Tighten the screws with a socket and ratchet only to hand-tight being careful not to strip out the sheet metal. Repeat for the other side of the vehicle.
- Now we'll place the Upper L-shaped brackets. This step is typically easier with the hood laid back against the windshield so you can easily see and access the area. On the CJ hood there are a series of oblong holes in the front support structure. The prop rod is mounted between two of these holes on the passenger side of the hood. Remove the prop rod and install the L-shaped upper bracket in this area orienting the bracket as per **Fig. 5a**. It's not imperative that the L-shaped bracket be positioned exactly as the image shows, just relatively similar. Mirror the L-bracket location for the driver side.
- See **Fig. 5b** for YJ L-bracket positioning.





Protecting Your Adventure Lifestyle

Warrior Products, Inc.  
16850 SW Upper Boones Ferry Rd  
Ste. A  
Durham, OR 97224  
Phone (888) 220-6861  
Fax (503) 692-0364  
sales@warriorproducts.com



- Once you've installed the Upper L-Brackets, slide the Upper Front Brace tubes onto the Upper Rear Brackets' rod ends and using the  $\frac{1}{4}$ " x  $\frac{5}{8}$ " bolts and  $\frac{1}{4}$ " locknuts, attach them to the Upper L-Brackets. **Fig. 6**
- Install the remaining ball ends onto the Upper Front Brace mounting tabs. You can use any of the 6 holes, however it is recommended that you start with the uppermost hole (with the hood open) and adjust if needed.
- Before installing the gas springs, take a moment to cycle them so the seal gets lubricated and they'll function smoothly right away. Hold the cylinder side with both hands and compress them against some carpet or mat so the bottom doesn't slide out. Now take the gas springs and with the cylinder side up, snap them onto just the upper ball studs allowing them to hang. Next, if you still have the factory prop rod installed, fold it back into its parked location while holding up the hood with your hand. Now snap the rod end of the gas springs onto the lower ball stud plate brackets taking care to not let go of the hood until both gas springs are snapped into place. If you snap the gas springs completely on before folding the factory prop rod, you may have some difficulty disengaging it. Your hood will now remain up, but before testing the opening and closing function of the install, check for tools or anything that may have been left in the engine compartment.
- Once you've determined the engine compartment is free and clear, go ahead and lower the hood slowly making sure there are no binding or clearance issues. The grill support rods will flex a little as they push against the pressure of the gas springs, but they will bounce back into place. If everything checks out ok, lift up on the hood allowing the gas springs to take over about  $\frac{1}{3}$ <sup>rd</sup> of the way up. Close and open the hood a few times to check the gas springs' functionality. They should raise the hood from a neutral point about 12" opened and come to a smooth, dampened stop at the top of the stroke. If it does not have that dampened stop, you may have inadvertently installed your gas springs upside down. The large cylinder portion of the gas spring should be oriented up as it allows the internal oil to remain at the seal prolonging the life of the springs and giving them that dampened feature.
- If you ever need to remove a gas spring from its ball stud, slip a small screwdriver under the small semi-circular clip near either end of the gas spring and pry it up to release it from the ball stud it is capturing.
- Your installation is now complete.



If you need further assistance installing your product, please contact us by email at [techsupport@warriorproducts.com](mailto:techsupport@warriorproducts.com) or call us at (888) 220-6861.

**THANK YOU FOR PURCHASING WARRIOR PRODUCTS**

QUALITY · INTEGRITY · INNOVATION · SERVICE